

# E119 Fire Resistant Frame Solutions

## *Narrow Stile Doors with Fire Resistive Glass*



Pioneer is pleased to partner with Vetrotech, a Saint-Gobain company to provide Narrow Stile Doors with Fire Resistive Glazing to be used in Fire Resistive Frame Solutions that are tested and certified to ASTM E119, UL 263 and NFPA 251. E119 Fire Resistive Solutions also meet the International Building Code for fire resistive rated requirements. Fire resistive solutions block the passage of flames and also blocks the passage of excessive radiant heat and hot gases. Doors with fire resistive glazing are required by code to be used with fire resistive transom sidelight and fire window frames with greater than a 45 minute rating or where the glazed area exceeds 25% of the wall area.

### Features:

- Full glass narrow stile and rail doors with 60 and 90 minute fire ratings
- 60 minute fire rating: Singles and pairs  
Maximum leaf size 4'0" x 10'0"  
Optional level 3 bullet resistance rating using Contraflam UltiMax glass
- 90 Minute fire rating:  
Singles and pairs  
Maximum leaf size 3'6" x 8'0"
- Contraflam glass from Vetrotech fire resistive safety glass must be used. It contains an interlayer that becomes opaque in the event of fire and acts as a heat shield insulating against the fire
- A wide range of tested and approved hardware is available including concealed hinges and door closers

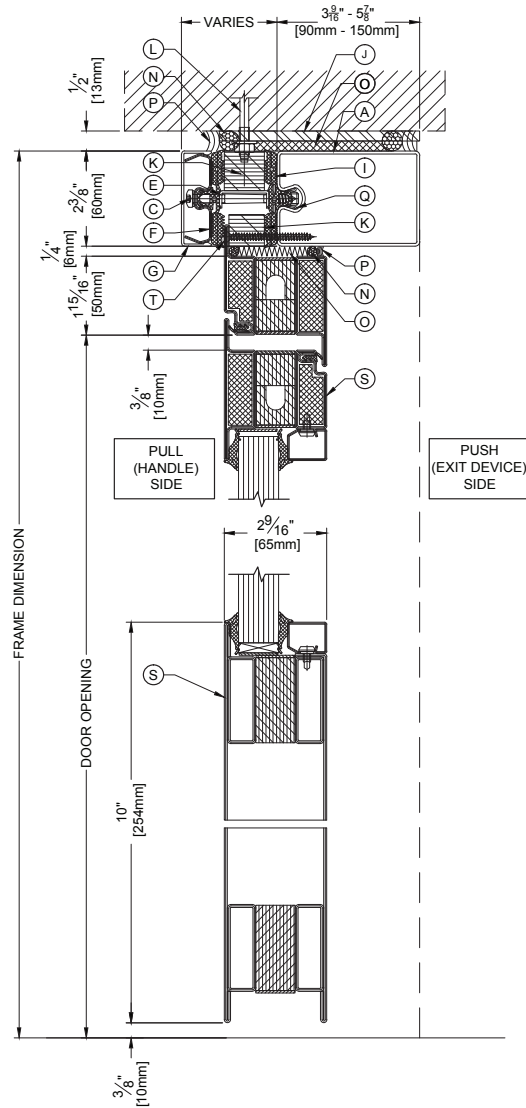
### Applications:

- Stairwells
- Corridors
- With fire resistive frames

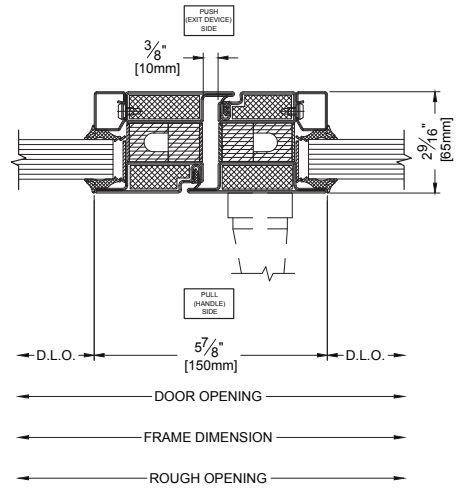
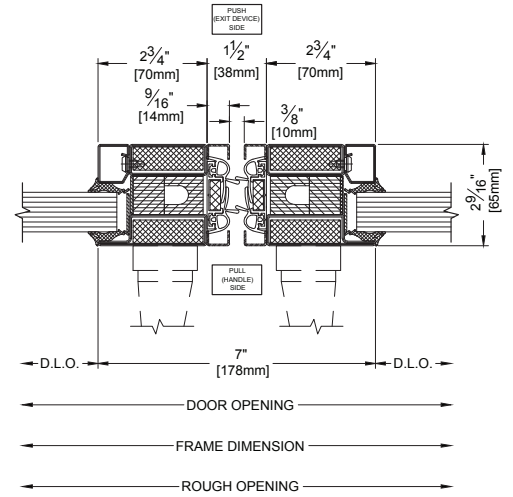
## Door Vertical Cross-Section

### NOTES:

- A. STEEL CURTAIN WALL HORIZONTAL MEMBER
- B. STEEL CURTAIN WALL VERTICAL MEMBER
- C. PRESSURE PLATE LOCKING SCREW
- D. SETTING BLOCK (BY OTHERS)
- E. SETTING BLOCK SHELF
- F. PRESSURE PLATES
- G. HORIZONTAL COVER CAP
- I. HORIZONTAL WEATHER STRIPPING
- J. FRAME BASE PLATE AT VERTICAL
- K. HARDWOOD BLOCK
- L. ANCHOR (BY OTHERS)
- M. SHIM AS NECESSARY (BY OTHERS)
- N. FIRE STOP AND SMOKE SEAL (BY OTHERS)
- O. FIRE RESISTANT LOOSE INSULATION (BY OTHERS)
- P. FINISH SEALANT (BY OTHERS)
- Q. CLAMPING FOOT
- R. HINGE PER HARDWARE SCHEDULE
- S. E119 60/90 DOOR
- T. DOOR ASSEMBLY FASTENER TO CURTAIN WALL



## Door Meeting Edge Options



The ASSA ABLOY Group is the global leader in access solutions. Every day, we help billions of people experience a more open world.

ASSA ABLOY Opening Solutions leads the development within door openings and products for access solutions in homes, businesses and institutions. Our offering includes doors, frames, door and window hardware, mechanical and smart locks, access control and service.

111 Kero Road  
 Carlstadt, NJ 07072  
 Phone: 201-933-1900  
[pioneerindustries.com](http://pioneerindustries.com)

Pioneer is a brand associated with AADG, Inc., an ASSA ABLOY Group company. Copyright © 2019, AADG, Inc. All rights reserved. Reproduction in whole or in part without the express written permission of AADG, Inc. is prohibited.