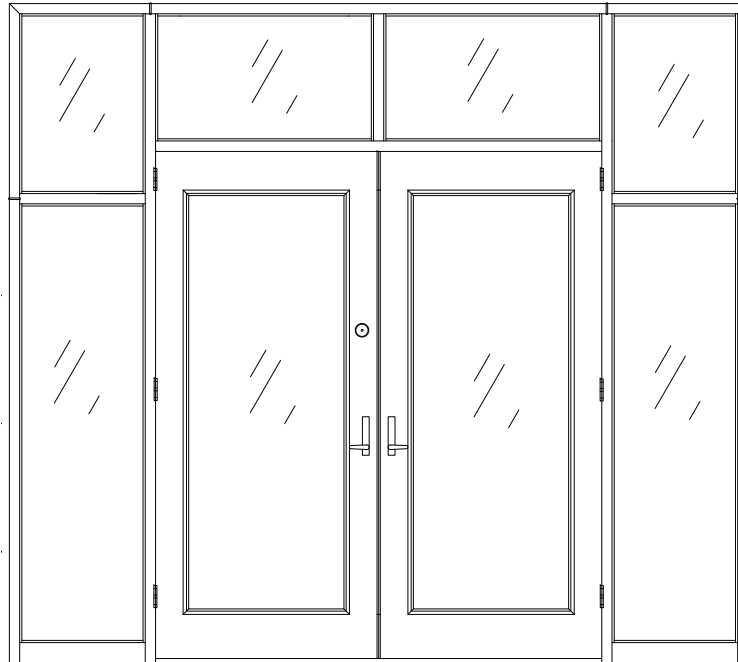


SERIES PIOCANE -50

+/- 50 PSF HURRICANE RATED STOREFRONT ASSEMBLY

SERIES PIOCANE-STOREFRONT-50 - FL#14445

PIOCANE-STOREFRONT-50



SPECIFICATION FOR HVHZ AND WIND BORNE DEBRIS AREAS

1. TESTED IN ACCORDANCE WITH TAS 201, TAS 202, TAS 203
2. MAXIMUM SIDELITE/TRANSOM FRAME SIZE: 12'-8" X 10'-4"
3. FRAME SERIES: F16 -5 3/4"-14" JAMB DEPTH; WELDED OR SPLICED FOR FIELD WELDING
4. SIDELITE/TRANSOM GLAZING: 7/16" LAMINATED. MAXIMUM SIZE EACH: 24" W X 80"H
5. HP18 SERIES PANELS MAY BE USED IN LIEU OF GLAZING
6. ANCHORS: MASONRY OR EXISTING OPENING ANCHORS
7. DOOR SERIES: H18, HP18 OR HT18
8. DOOR SIZE: SINGLE 4'-0" X 8'-0"; PAIR 8'-0" X 8'-0"
9. DOOR GLAZING: 7/16" LAMINATED . MAXIMUM TESTED SIZE: FG (32" X 72")
10. VISIT WWW.FLORIDABUILDING.ORG FOR ADDITIONAL HARDWARE DETAILS

SPECIFICATION FOR INLAND AND NON-IMPACT AREAS

1. TESTED IN ACCORDANCE WITH TAS 202-94
2. MAXIMUM SIDELITE/TRANSOM FRAME SIZE: 12'-8" X 10'-4"
3. FRAME SERIES: F16-5 3/4"-14" JAMB DEPTH; WELDED OR SPLICED FOR FIELD WELDING
4. SIDELITE/TRANSOM GLAZING: 1/4" WIRED GLASS. MAXIMUM SIZE EACH: 24" W X 80"H
5. HP18 SERIES PANELS MAY BE USED IN LIEU OF GLAZING
6. ANCHORS: MASONRY OR EXISTING OPENING ANCHORS
7. DOOR SERIES: H18, HP18 OR HT18
8. DOOR SIZE: SINGLE 4'-0" X 8'-0"; PAIR 8'-0" X 8'-0"
9. DOOR GLAZING: 1/4" WIRED GLASS . MAXIMUM TESTED SIZE: FG (32" X 72")
10. VISIT WWW.FLORIDABUILDING.ORG FOR ADDITIONAL HARDWARE DETAILS